



Decorative details

'I've focused on getting as much light as possible into the house. A bright interior seems to freshen up everything around the house, not just the rooms but your mood as well! Keeping the background colour neutral has also accentuated the accessories and furnishings, which helps to bring the surrounding countryside into the home. The colour scheme also helps to soften the effect of the colourful furniture.'



Silver slate blue floor tiles (30 x 30cm), £40.99 per sq m, Fired Earth

◀ Wicker trug in raspberry, £13, Garden Trading

Annabelle's style file

Be inspired by Annabelle's combination of colourful furniture buys and neutral décor

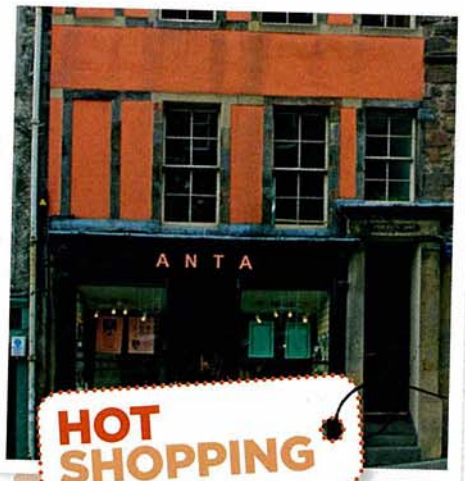


◀ Hamilton Bed, from £489 for a double, The Original Bedstead Company



▲ Hunter Herald stove (flat-top), £585, Stoves Online

☎ ✉ @
For details, see stockist pages



HOT SHOPPING

▼ Stockholm Rand rug (L240 x W170cm), £89.90, Ikea



▶ Woollen blankets (L170 x W140cm), £15 each, Holloways



▼ Buckingham roll-top bath with Imperial feet (H59 x W60.2 x L156.2cm), £1,440, Heritage Bathrooms



'I love the quintessentially Scottish, rustic style of Anta's products,' says Annabelle. Anta is a family-run, Scottish design and architecture company, founded in the early 1980s by Annie and Lachlan Stewart. All Anta products are made in Scotland from the finest natural materials and produced in colours and designs inspired by the Scottish landscape. Annabelle bought her tartan mugs from Anta. You can shop online at www.anta.co.uk or visit the shop at 91-93 West Bow, Victoria Street, Edinburgh Old Town.

Farquharson stoneware large mug (375ml), £18, Anta

